

## Data Sheet

# Workflow Engine – Flexible Process Modelling



Do you want to streamline, monitor and optimise your corporate processes?

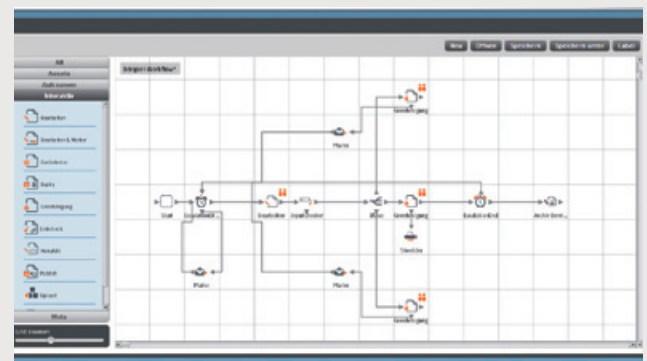
The imperia Workflow Engine makes life easier for you.

### Flexible modelling of your corporate processes

Are your corporate processes complex and diverse? To remain competitive in this situation, you need constant optimisation of your processes and quick adaptation to new developments. For a content management platform this means that defined operating procedures may not be cast in iron. A CMS must provide the option of flexible, quick and easy responses to developments using workflow modifications.

The imperia Enterprise Content Management System adapts to your corporate processes – not the other way around! The imperia Workflow Engine makes it possible. Even complex processes can be quickly and easily implemented – such as multi-stage release and escalation processes on the intranet or the implementation of a multilingual portal followed by publishing in various output media.

All workflows that you map in imperia are defined intuitively using a graphical user interface, the grid. The individual steps of the workflow are represented by graphical elements (PlugIns) which can be simply dragged onto the grid, “dropped” there and connected to each other. The workflow created in this way can be implemented immediately. Modelling and implementation of the workflow take place simultaneously. Time-consuming programming is unnecessary.



Workflow grid for creating user-defined workflows

### imperia PlugIns: Unlimited extensibility and integration

The more important the subject of content management becomes in companies, the better a corresponding system must be able to communicate with existing applications. It should therefore be possible to call third-party solutions from the content management system in order to integrate them into the workflow or to adopt data from supplementary systems such as SAP R/3 via interfaces.

imperia overcomes these challenges with its PlugIn concept. The Workflow Engine is delivered with a series of PlugIns already included. There are also PlugIns developed in numerous projects

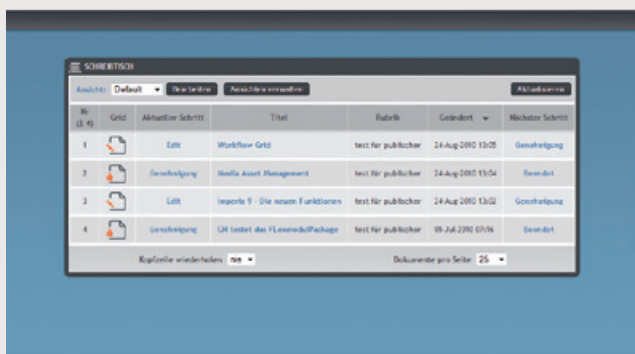
available for your use. And if all that is not enough, you can also (have someone) develop additional functions and easily integrate them using the Workflow Engine.

### imperia desktop: always neatly arranged

The desktop is the interactive interface for the workflow. Functions such as to-do lists, active message management and escalation mechanisms are managed from the desktop. Each user – regardless of his or her rights – can view the status of the generated documents via the desktop. Each user can freely configure the degree of detail of the desktop view as well as the sorting and filtering settings.

#### Performance features

- Definition of user-defined workflows via a graphical workflow editor (grid)
- Definition of user-defined workflow steps using a PlugIn
- The PlugIns are “dragged” onto the grid and “dropped” there; they are then combined into workflows with a click of the mouse
- Numerous PlugIns are available and other user-defined PlugIns can be easily created and integrated
- PlugIns can be created using Perl, C++ or Java
- Definition and programming of the workflows in one step
- Modelling user-defined release and publishing rules
- Detailed rights assignment to the users
- Desktop with status overview, freely configurable views, diverse filtering options, sorting options and check-in/check-out functions



imperia desktop

#### Application scenarios

##### Managing multilingual websites

There is usually a sophisticated publishing concept behind a multilingual website. This defines when content is to be entered by a specific colleague, how the translation is to be done and when a specific document is to be published. The imperia Workflow Engine allows the greatest variety of models to be mapped. An external translator can be notified by e-mail, for example, as soon as a task is available for him or her.

##### Connecting to billing systems

The billing of paid content is carried out with the help of billing systems. Within the framework of a workflow, the content is supplemented with price information and then connected to the corresponding billing system. This is carried out fully automatically so that the author can concentrate on the content.

##### Online application

Another example is the response rate of information from a website, such as from online surveys. A suitable workflow would be set up as follows: importing the content from the online survey form such as an XML document, automatic checking for completion, assignment to the proper department, publishing in a protected part of the intranet and notifying the applicant about the status of his application. All the steps listed are carried out using imperia.

##### Application for leave

Applications for leave are a common example of internal processes that can be mapped with the help of the imperia Workflow Engine. Instead of filling out an application for leave on paper and entering it into the approval workflow, an employee can fill out an application for leave in a personalised form directly on the intranet. The data entries are then processed in an “application for leave workflow”. The first step could be a plausibility check of the data entries (bans on leave, trial periods, remaining leave, etc.). The application for leave must then be approved by one or more people. Additional steps could include updating the leave calendar on the intranet or an automatic printout of the approved application for the personnel files.

#### Contact

Imperia AG · Leyboldstraße 10 · D-50354 Hürth, Germany  
Phone: +49 2233 807 0 · Fax: +49 2233 807 100 · info@imperia.net